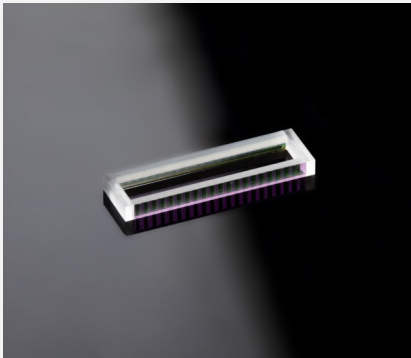


FAC-TELA Collimation Module

FAC590 with TELA for ES200/P400



Features and Advantages

Collimation module consisting of FAC590 and telescope array TELA 200-400 mounted with side tabs for the collimation of the fast and slow axis of diode lasers.

Emitter size of up to 200 μm and emitter pitch 400 μm .

* Product similar to image, see product drawing below.

Product Specifications

Specification Data	Unit	Value
Material		S-TIH53 (Ohara)
Length (L)	mm	13.0 \pm 0.25
Width (W)	mm	1.0 \pm 0.05
Thickness (T)	mm	4.13 \pm 0.05
Clear aperture	mm ²	11 x 0.84
Back focal length BFL @ 808 nm	mm	0.15
Pitch	mm	0.4
Fast axis power within an angle of \pm 1.1 mrad ⁽¹⁾	%	> 85
Transmission	%	> 98

Product Code **MOD000246**⁽²⁾

Specification Data	Unit	Value
AR-coating	nm	790 - 990
Remaining divergence (FW1/e ²) for slow axis	mrad	100 (typically)

⁽¹⁾ Valid for an emitter-height of 1 μm and no smile of the laser diode.

⁽²⁾ Example for customization – customized coating and bottom tab for mounting on request.

Product Dimensions (mm)

